

# Machine Reconditioning

Bringing old machinery back to life



# Contents

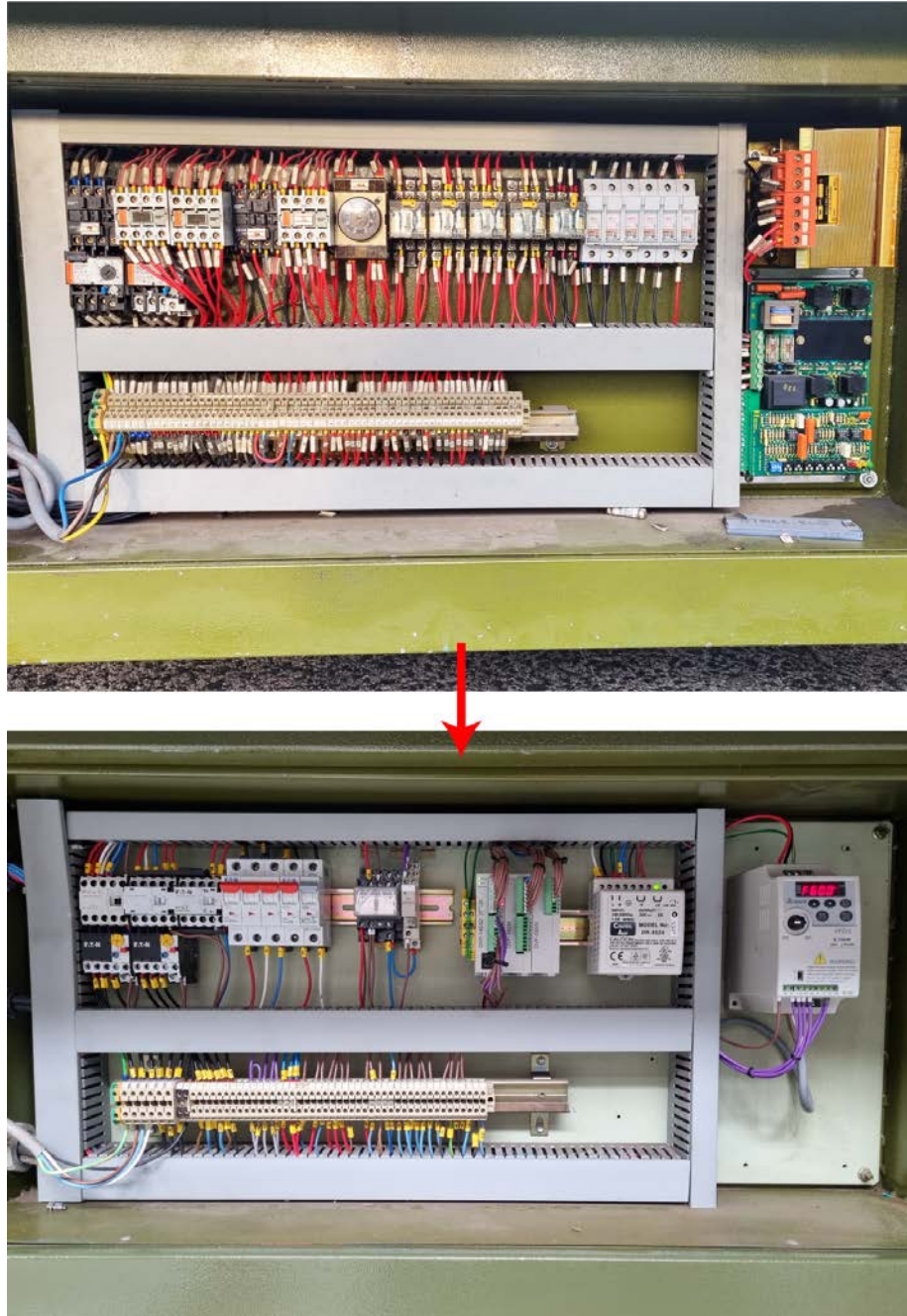
Electrical.....	2
New PLC and Switchgear.....	2
New Control Panel.....	3
Motor Service.....	3
Replace/Repair damaged parts.....	4
Table Dent Repair.....	5
Chains and Bearings.....	5
Pneumatic Repairs.....	6
General Frame Cleaning & Painting.....	7
Upgrades (Simplex).....	8

# Electrical

## New PLC and Switchgear

We can replace it all. All electrical components have a life cycle, meaning they don't last forever.

The main problem with old machines that use PLCs (Programmable Logic Controllers) is that once they fail they can not be easily replaced. Rewiring a machine with a current PLC will ensure that not only can the PLC be replaced if it fails but also allow fast fault finding and repair.



## New Control Panel

Not only does a new control panel enhance the look of the machine but it also improves functionality.

We can also add functions that the machine did not have previously to improve its usability.



## Motor Service

Motors have bearings, windings, brushes, brakes that all have wear and tear. We remove the motor/s and take them to a specialist for some TLC.



## Replace/Repair damaged parts

Firstly the machine is assessed for any faulty parts and we notify the customer of the repairs that are required.

Faulty air cylinders, fittings and air hoses are replaced.



*Sias Simplex inversion block being re-bored*

## Table Dent Repair

We use a special compound that evenly fills and adheres to even the most minor dents in tables. Once it sets, the table is sanded down and redrilled. This ensures a flat surface that is critical to accurate print



*A table with multiple dents being repaired*

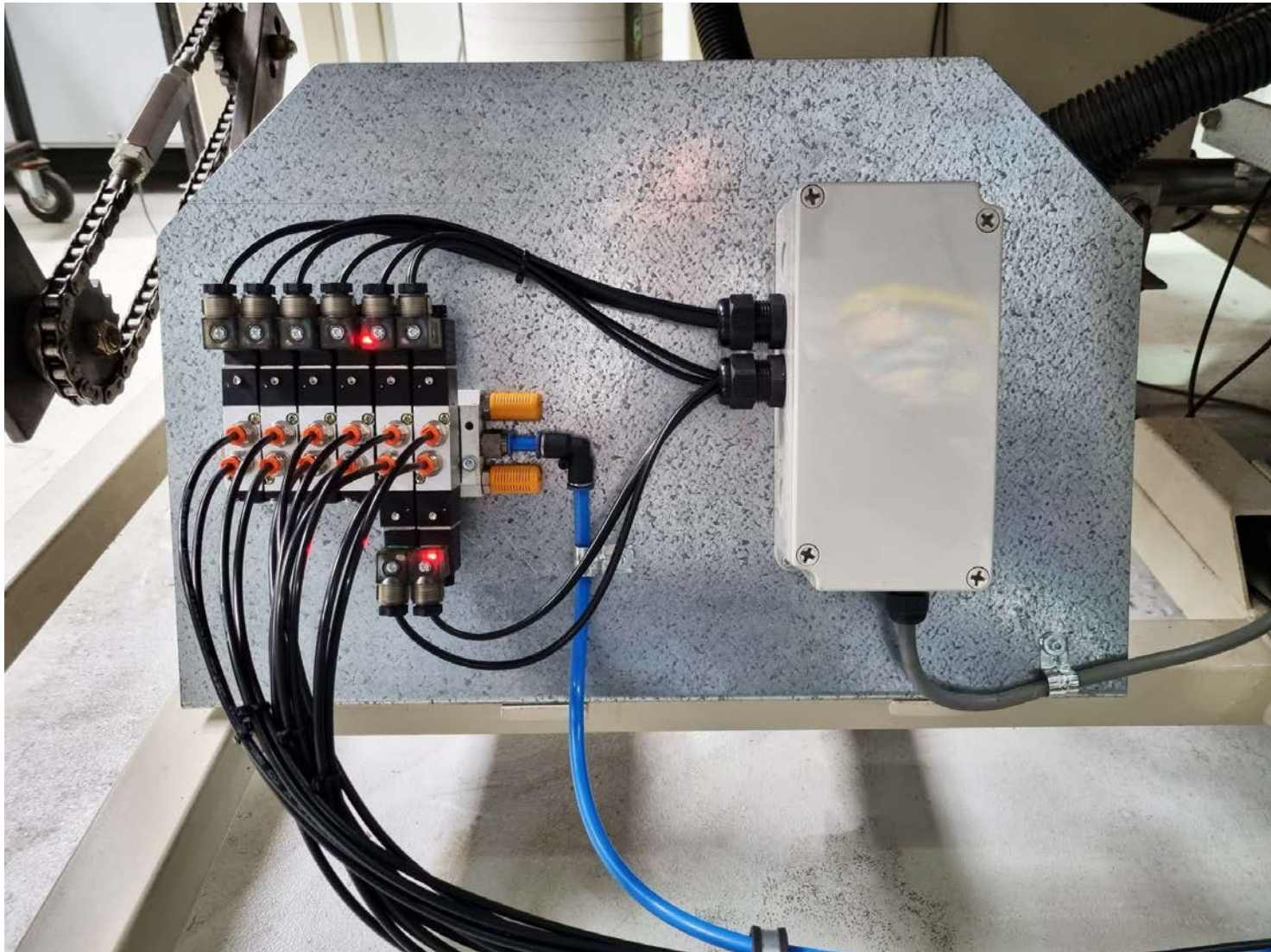
## Chains and Bearings

All chains and bearings are assessed and replaced if necessary.

# Pneumatic Repairs

Over the years the pneumatic components deteriorate.

Often the valves and solenoids on the machines are discontinued, so we can replace them with readily available valves and solenoids.

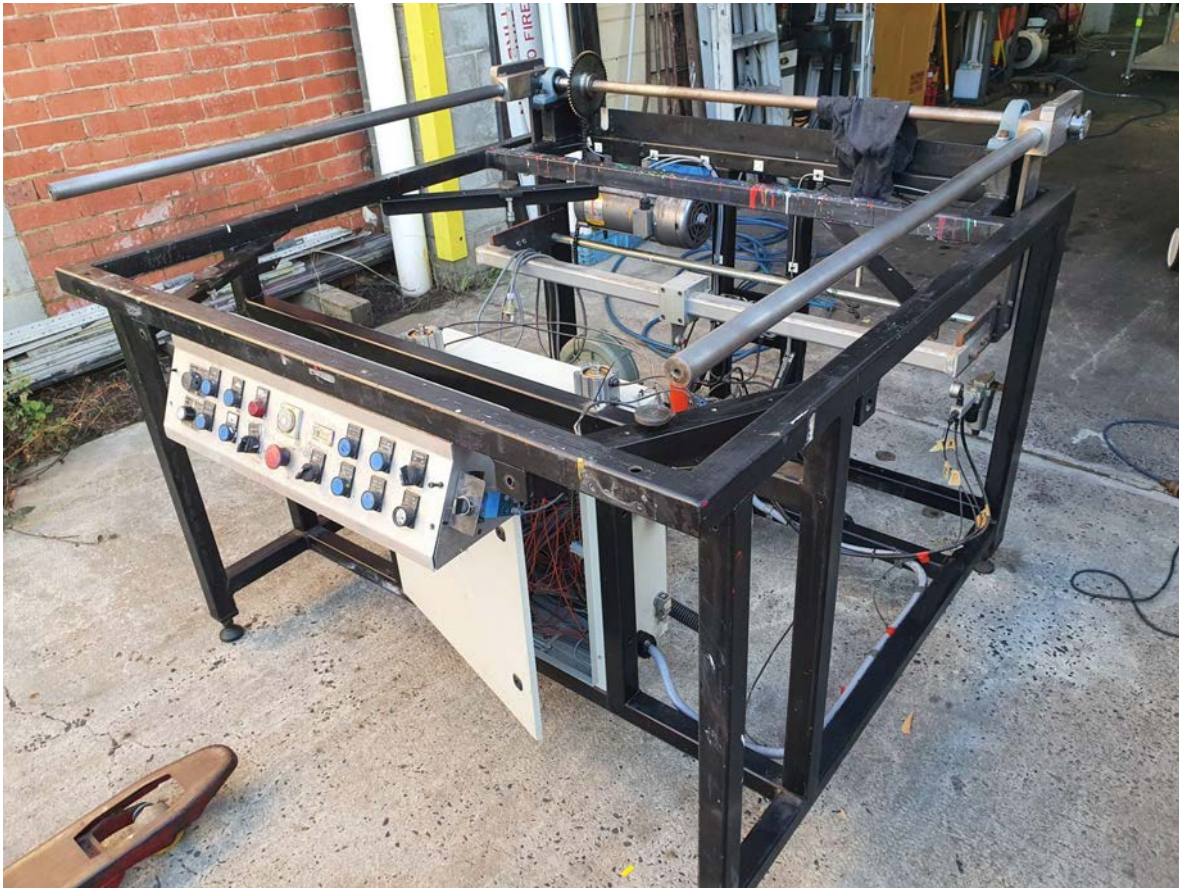


# General Frame Cleaning & Painting

The machine is stripped down and pressure cleaned to remove years of dust, grease and grime.

Upon request we can sand and paint the frame with 2 pack paint. The hardener in 2 pack paint makes it more resistant to damage. Guards can also be painted with colour matched paint.

The paint we use is 2 Pack PPG Marine Grade





## Upgrades (Simplex)

- Pneumatic vacuum on / off for set up
- Cycle 1 & 2. Allows user to finish the print with a clean screen
- AC Inverter
- AC Motor / Gearbox
- Sliding proximity switches for print stroke

